

Operation/Maintenance

Vertical Roller Mill

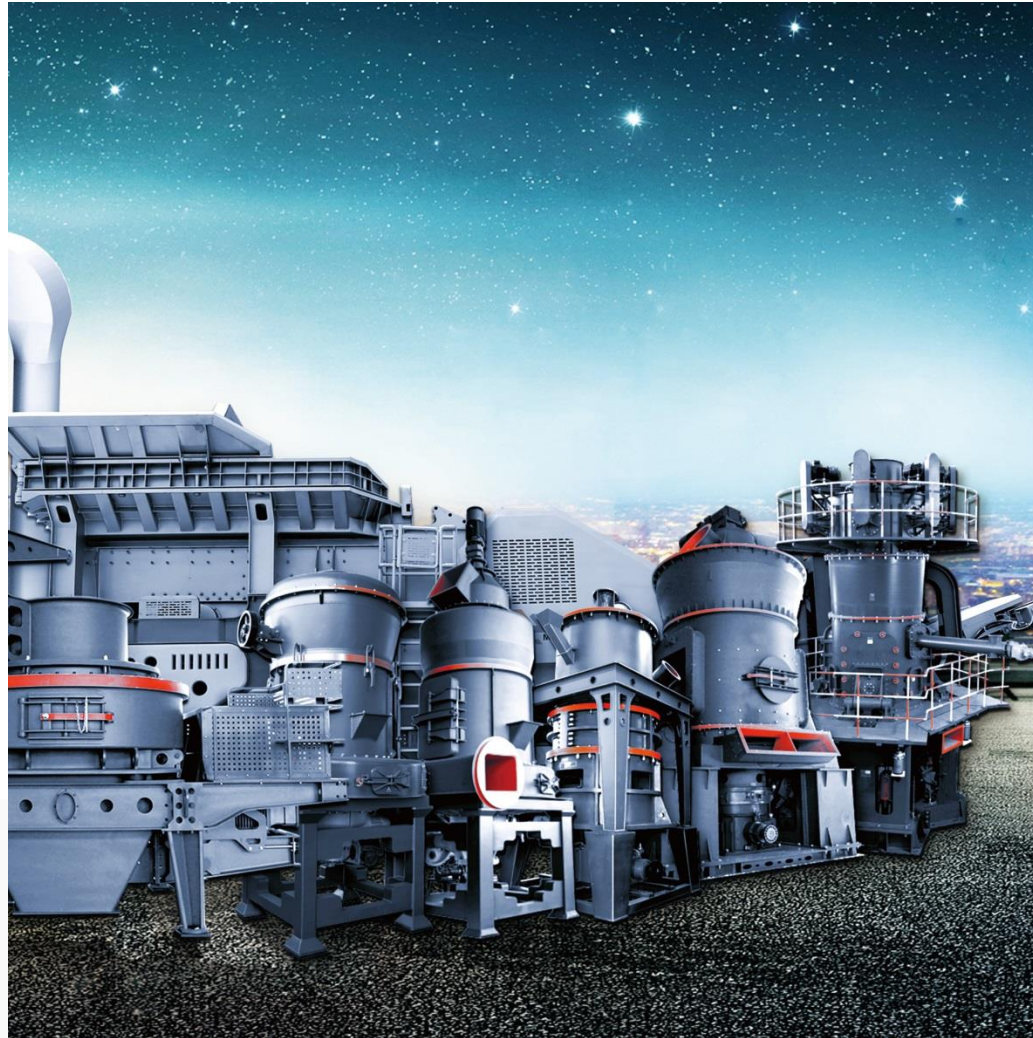


<https://www.gravemill.com/solutions/vertical-roller-mill-operation.html>

Type Of Vertical Roller Mill



 LM Series
Vertical
Grinding Mill



 LUM Series
Ultrafine
Vertical Mill





Custom Site



FIELD PICTURE





Operation Guide

Exerting pressures are 50 to 100bars on the basis of the projected area of the roll, onto the layer of clinkers passing between the two rolls.



Abrasion-resistant parts are classified in one unit type or segment type. In any type, abrasion-resistant parts should be replaced to new one or hard facing, if they are worn out.



Application



marble



calcite



limestone



dolomite



barite



bentonite



granite



kaolin



basalt



calcium carbonate



slag



gypsum



feldspar



silica sand



quartz





No. 1688, Gaoke East Road, Pudong new district, Shanghai, China.

+86-21-58386189, +86-21-58386176



<https://www.gravelmill.com/solutions/vertical-roller-mill-operation.html>